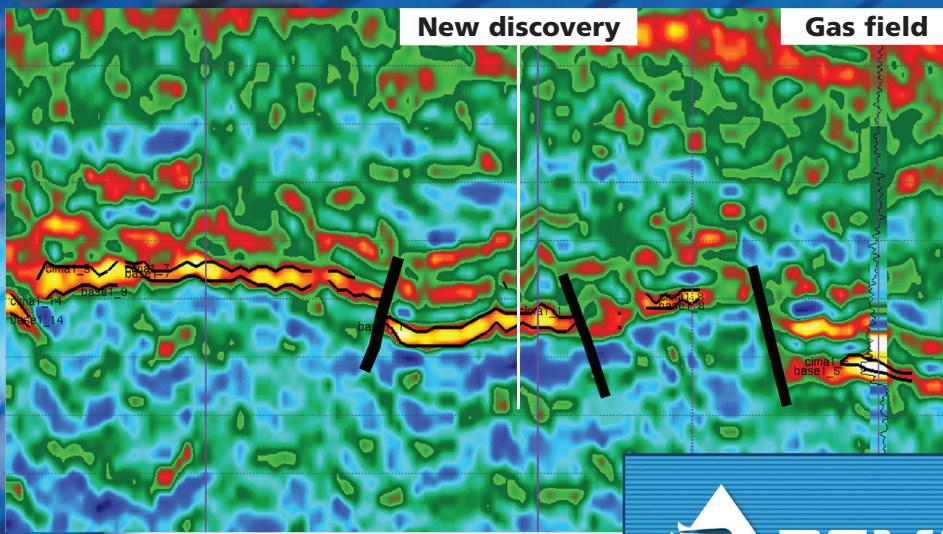


Burgos basin, Mexico



Exclusive, direct reservoir indication from a combination of *P*- and *S*-impedance information resulting from Jason Global Simultaneous AVO Inversion.



Objective

After an exploration phase including several dry wells, PEMEX decided it needed a full subsurface study to delineate and characterize the producing reservoirs in the area and to identify exploration and development opportunities based on the best-possible information.

Implementation

PEMEX selected the Jason Geosystems **RockTrace™** software and service to develop the desired subsurface information. **RockTrace** is powered by the unique Jason Global Simultaneous AVO Inversion technology.

Result

PEMEX identified the **RockTrace** *P*- and *S*-impedance results to develop a superior definition for the reservoir lithology and fluid content, resulting in a substantial reduction of the risk in further development of the Burgos basin.

Several new compartmentalized reservoirs were located and, as a result, a new discovery was made.

All subsequent wells drilled using data from the study showed a very good agreement with the predicted lithologies and fluid content.

For more information, see SEG paper "Fluid and Lithology Identification Using Simultaneous Angle-Dependent Inversion, Burgos Basin, Mexico".



#1 in reservoir characterization



Find out more at www.jasongeo.com

Copyright © 2003 Jason Geosystems. All rights reserved.