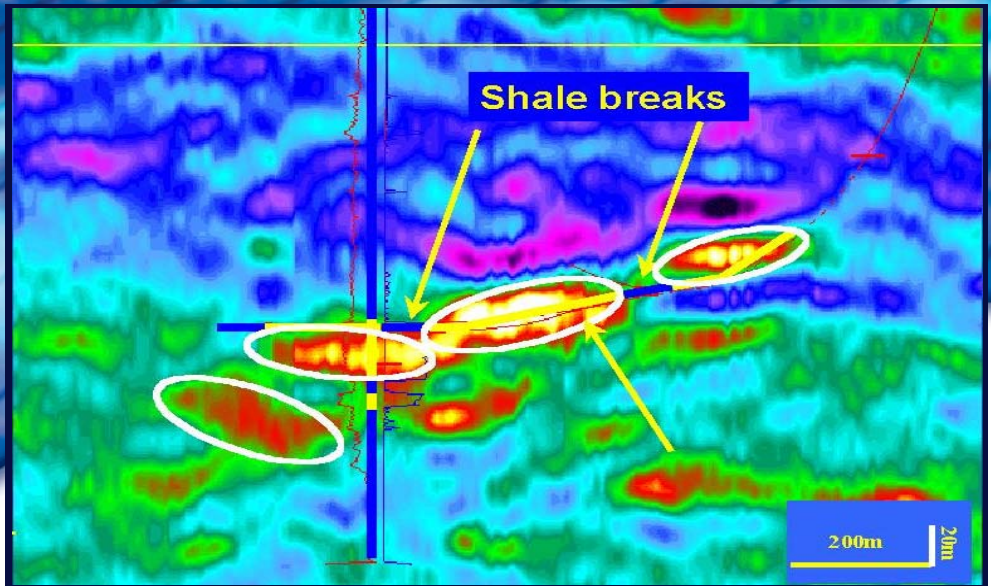


# Enhancing Production in the North-Sea



Well trajectories through converted wave impedance cube, where bright colours indicate sands. Example courtesy the Alba partners (Chevron, Conoco, bp, Petrobras, Statoil, TotalFinaElf, and Unilon/Baytrust).

## Objective

Chevron needed to predict the sand and shale distribution in one of its fields to ensure maximum sand penetration and production from new horizontal wells. Critical to the project's success was the construction of a new sand/shale model. A high quality multi-component dataset shot in 1998 promised to provide better definition of the field's lithology. But how to best use this new data?

## Jason's 3DiQ Reservoir Characterization

Jason applied its unique 3DiQ software to construct a new model. This innovative approach *quantitatively* combines seismic, AVO, 4C, well log, geological, petrophysical and geostatistical information to generate accurate and reliable lithology and rock property models.

## Drilling result

Nine new wells were drilled and are currently contributing a significant part of the total field production. Penetration of target sands improved from 70% to over 90%.

**JASON**

#1 in reservoir characterization



Find out more at [www.jasongeo.com](http://www.jasongeo.com)

Copyright © 2002 Jason Geosystems. All rights reserved